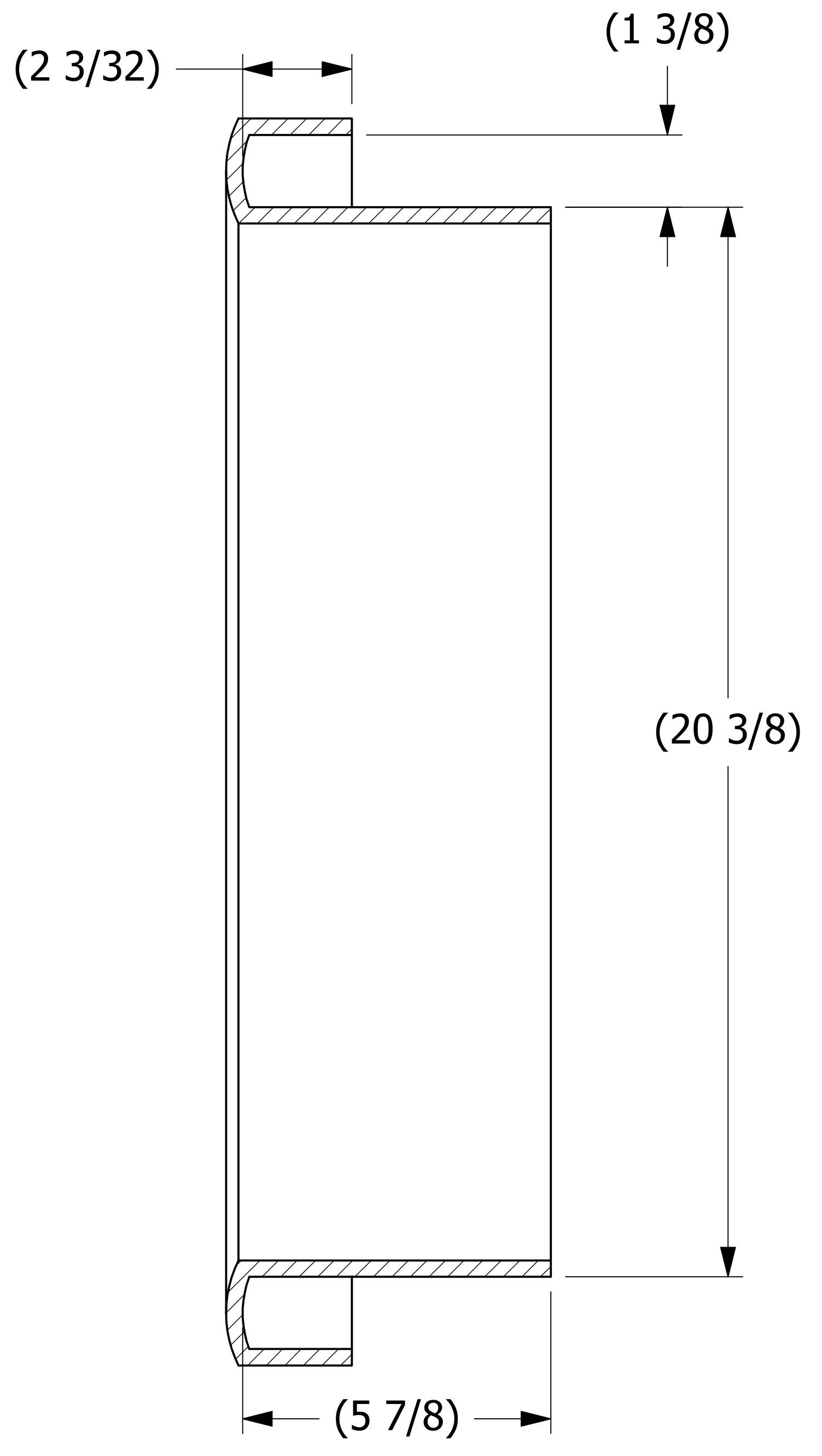
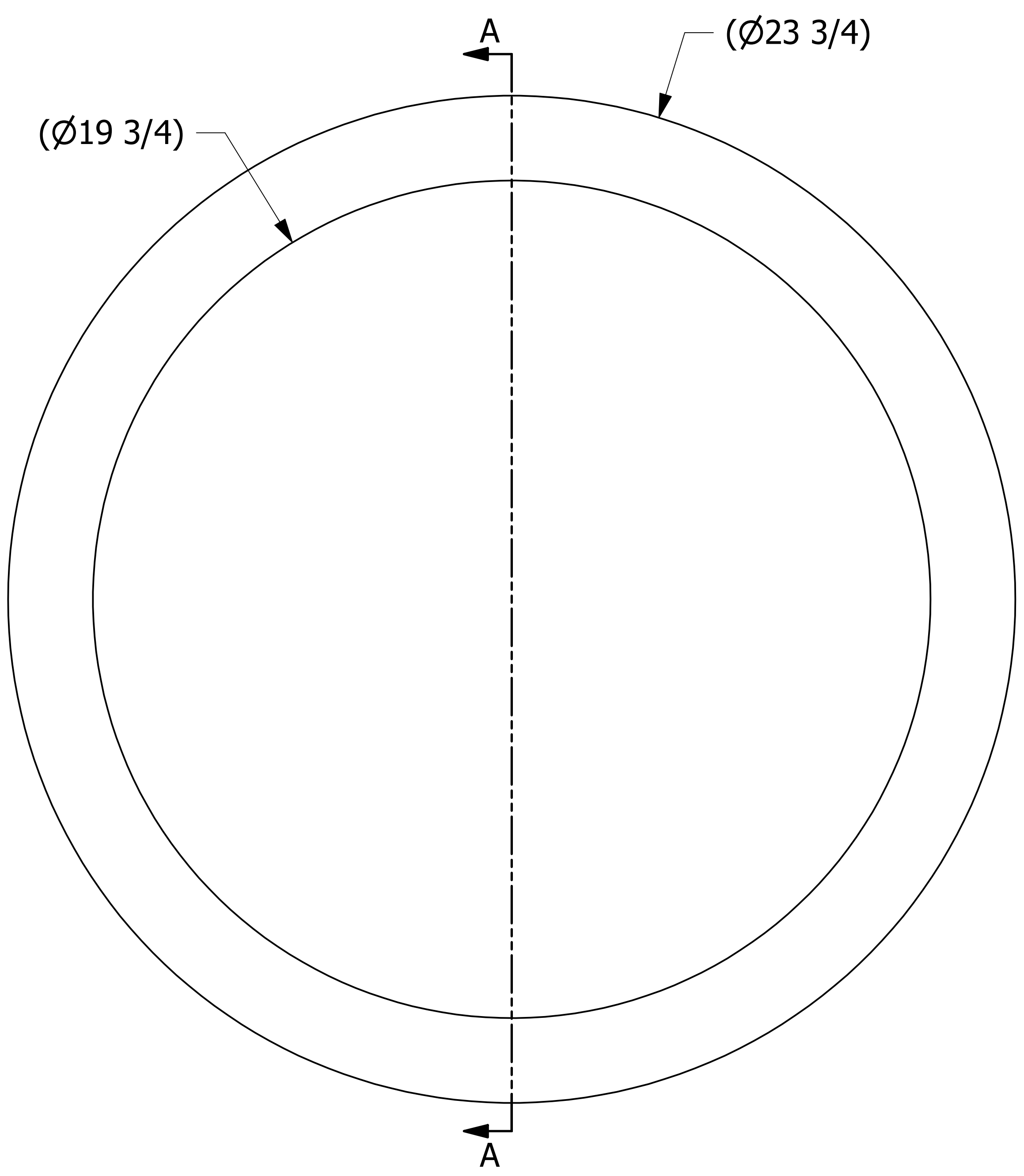


SALES DRAWING SALES DRAWING

SALES DRAWING SALES DRAWING



SECTION A-A

A	CHL	12-8-17	DIMS Ø20 3/8", 5.87", 2.08", Ø19 3/4", Ø23 3/4" WERE 1'-8", 6", 2", Ø1'-11 1/4", Ø1'-7 1/2"
REV	BY	DATE	DESCRIPTION

<small>UNLESS OTHERWISE SPECIFIED DIMENSIONAL TOLERANCES</small> FRACTIONAL: ±1/16 X.XX: ±.03 X.XXX: ±.015 ANGULAR: ±1° DEBURR ALL SHARP EDGES. ALL MACHINED SURFACES TO HAVE A 125 RMS FINISH UNLESS NOTED OTHERWISE. <small>THIRD ANGLE PROJECTION</small>	DRAWN BY:	CLH
	CHECKED BY:	
	PROTOTYPE BY:	CLH
	PROTOTYPE DATE:	10/22/1996
	APPROVED FOR PRODUCTION BY:	CLH
	PRODUCTION DATE:	10/22/1996

**SALCO PRODUCTS, INC.**

---

**THROAT LINER 20"**

---

**BLACK EPDM, DURO 80±5 SHORE A**

---

PROJECT #: SHEET #: 1 OF 1 SCALE: 1:1

---

DRAWING #: **D8416** PART #: **BP20TLE**

THIS PRINT, PROPERTY OF SALCO PRODUCTS INC. CONTAINS PROPRIETARY INFORMATION AND MUST NOT BE COPIED, REPRODUCED, OR USED DETRIMENTALLY TO OUR INTEREST.